



# Fostering Implementation of the Roaring Fork Watershed Plan

October 5, 2011

University of Michigan  
School of Natural Resources & Environment

Presenter: Amanda Barker  
Not Present: Bethany Hellmann  
Anne Kohl  
Kathleen McIntyre  
& Angela Michalek

Advisor: Dr. Julia Wondolleck



# Roadmap

1. Introduction and Research Questions
2. Cross Case Analysis
3. Summary Observations and Recommendations



# Roadmap

- 1. Introduction and Research Questions**
2. Cross Case Analysis
3. Summary Observations and Recommendations

# Roaring Fork Watershed



## Roaring Fork Watershed Collaborative- Water Committee: Goals

- Elevate importance of water
- Coordinating body
- Develop common goals & mission
- Reach out to the community
- Strengthen education programming





# Research Questions

- What are the lessons to RFWC- Water Committee from the array of experiences of others?
- How have other watershed groups organized themselves to deal with these issues?
- What types of projects and activities do they do?
- What is facilitating their ability to achieve these objectives?
- What challenges have they encountered?
- What educational strategies do they use?

# Literature Review on Collaborative Watershed Management

- Representation of all parties “at the table”
- Interdependence of Issues
- Common Identity
- Consensus
- Uncertainty & Joint fact-finding
- Trust needed for Implementation



# Case Studies sorted by Governance Structures

## ***Government- Authority***

- Henry's Fork Watershed Council
- Walla Walla Watershed Partnership
- Fountain Creek Watershed Flood Control & Greenway District
- Niobrara Council

## ***Government- Advisory***

- Water Forum
- Animas River Stakeholders Group
- Owl Mountain Partnership

## ***Community- 501(c)3***

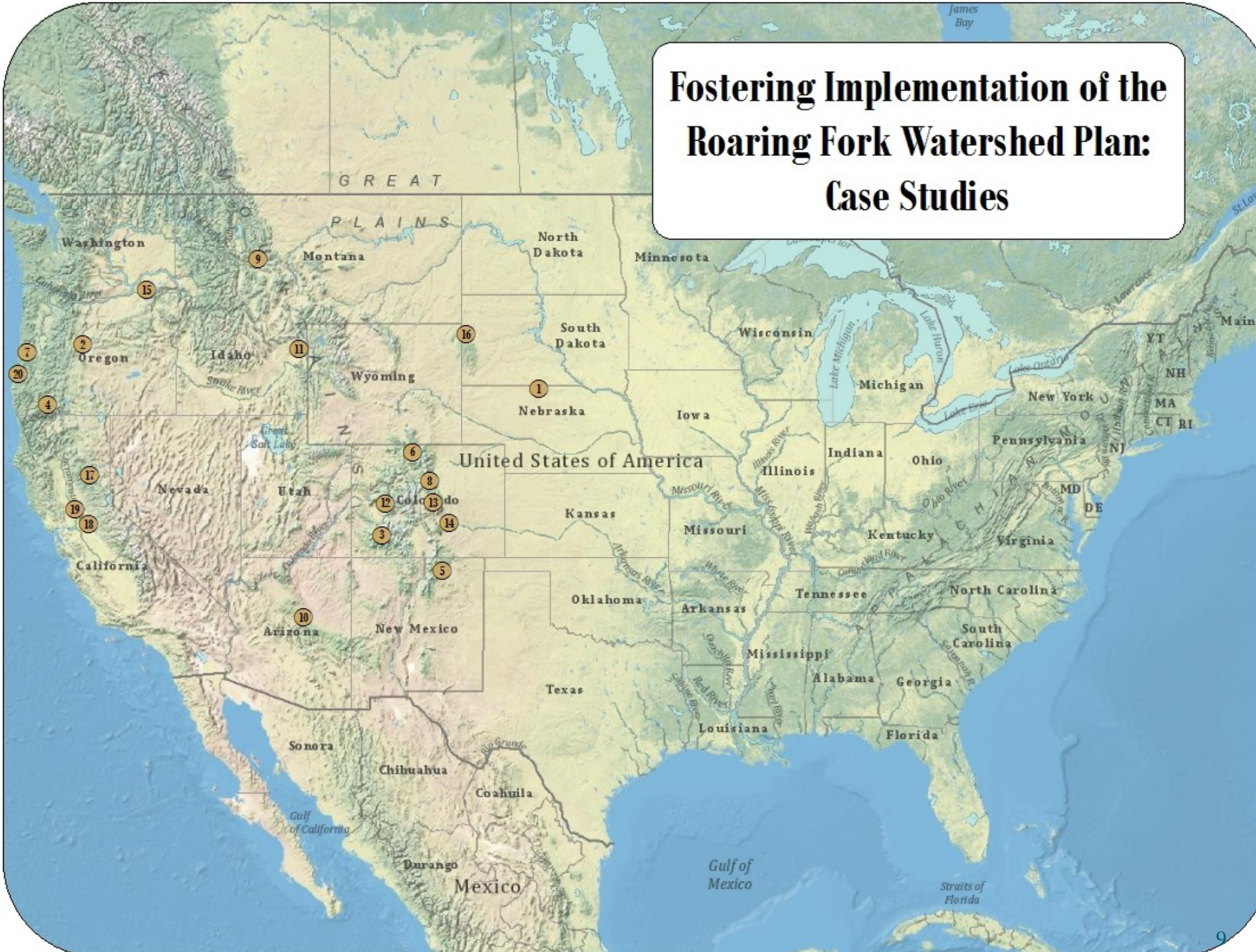
- The Blackfoot Challenge
- Siuslaw Watershed Council
- Coos Watershed Council
- The Deschutes River Conservancy
- Applegate Partnership & Watershed Council
- Cimarron Watershed Alliance, Inc.
- North Fork River Improvement Association
- The Diablo Trust
- Belle Fourche River Watershed Partnership
- Coalition of the Upper South Platte
- Clear Creek Watershed Foundation

## ***Community- Ad Hoc***

- Feather River Coordinated Resource Management Group
- Cosumnes River Project and Preserve



# Fostering Implementation of the Roaring Fork Watershed Plan: Case Studies





# Roadmap

1. Introduction and Research Questions
- 2. Cross Case Analysis**
3. Summary Observations and Recommendations



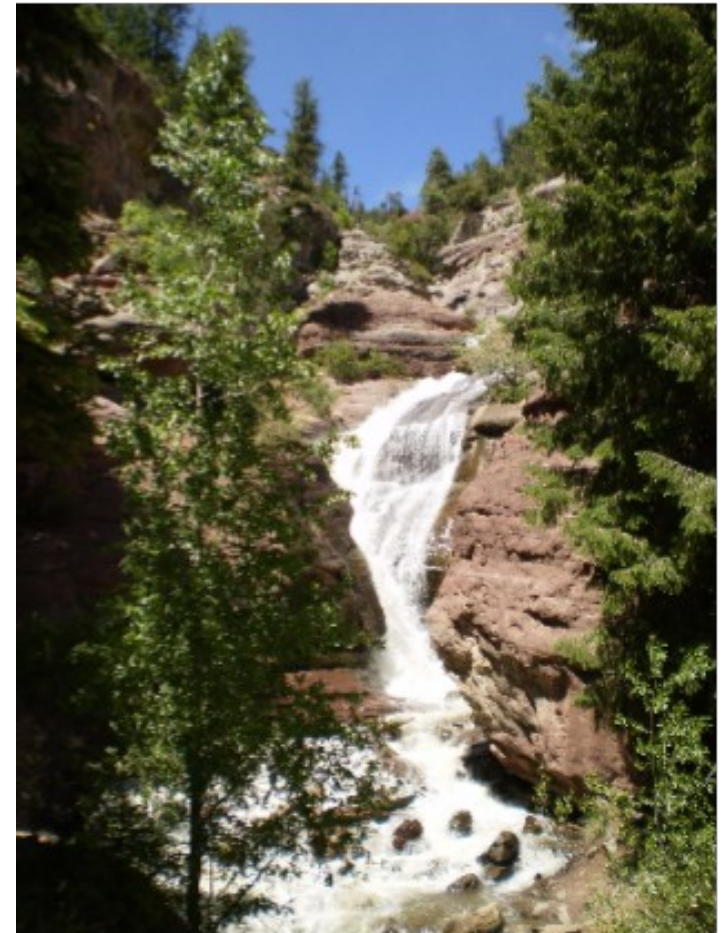
# Cross-Case Analysis

Organizational Structure  
Activities  
Education and Outreach  
Facilitating Factors  
Challenges

# Organizational Structure

Why do initiatives form?

- Threat of Federal regulation
- Poor resource management
- Lack of regional planning
- Provide local forum





# Organizational Structure

In what ways are watershed groups organized?

- Government-based with authority
- Government-based as advisory
- 501(c)3
- Ad Hoc

# Organizational Structure

- Board of Directors
- Staff
  - Paid
  - Volunteer
  - Consultants
  - Contractors
- Committees



# Organizational Chart of FRCRM



# Activities

- **Initial Activities**
  - Discussion of values, facilitator, watershed tours
  - Environmental assessment - Watershed plan
- **Mature organizations**
  - ***Primary activities:*** Restoration projects, information-sharing, water quality monitoring, stewardship & education
    - Voluntary approach
- **Creative Activities**
  - *Water banking*, conservation easements/fee titles, University partnerships, community brainstorm forums, dispute resolution



# Education and Public Outreach

- Target audience and messaging
- Increase Awareness
- Measures of Success
- Low-hanging fruit vs. Resource intensive



# Facilitating Factors

What facilitates coming together?

- Champion
  - A person who dedicates themselves for the partnership
- Sense of place
- Recognition of interconnectedness
- Threat
  - Designation of Superfund site, ESA, Wild & Scenic, Growing population
- Technical base knowledge
  - Pre-existing Assessments/studies

# Facilitating Factors

## *Trust*

- Possibly the most integral factors to making a partnership successful

### Built through:

- Communication
- Role of agency and government
- Organizational presence within watershed
- Diverse and equal representation
- Joint fact-finding
- Small, initial successes
- Voluntary nature of projects

# Major Challenges

- Funding for project implementation
- Capacity of staff
- Issue complexity
- Trust between participants



# Major Challenges

- Issues of legitimacy
- Buy-in to the process
- Ongoing participation





# Roadmap

1. Introduction and Research Questions
2. Cross Case Analysis
- 3. Summary Observations and Recommendations**

# Summary Observations of Roaring Fork Watershed Collaborative

- RFWC- Water Committee is on the right track!
  - Joint fact finding
  - Diverse coalition
  - Information sharing
  - Building initial relationships
  - Buy-in
  - Education component of Watershed Plan
  - Tailored roles



# Observations – How Others Have Organized

- Government – Authority
  - Government – Advisory
  - Community – 501(c)3
  - Community – Ad Hoc
- 
- Weak Ad Hoc organizational structure for RFWC
    - **Recommendation:** Develop more formalized commitments through Memorandum of Understanding



# Observations – What Others Do

- Array of activities
  - Initial, project driven, planning
- RFWC currently participates in information sharing, joint fact finding, and planning.
  - **Recommendations:**
    - Trust-building
    - Voluntary projects with clear objectives and cost-effective justification
    - Think creatively e.g. market-based mechanisms
    - Pursue varied funding opportunities

# Thank you!

- Questions?
- Our research can be found on the Roaring Fork Conservancy website: [roaringfork.org](http://roaringfork.org)

Amanda Barker  
[amandabarker@gmail.com](mailto:amandabarker@gmail.com)

Sharon Clarke  
Roaring Fork Conservancy  
[sharon@roaringfork.org](mailto:sharon@roaringfork.org)



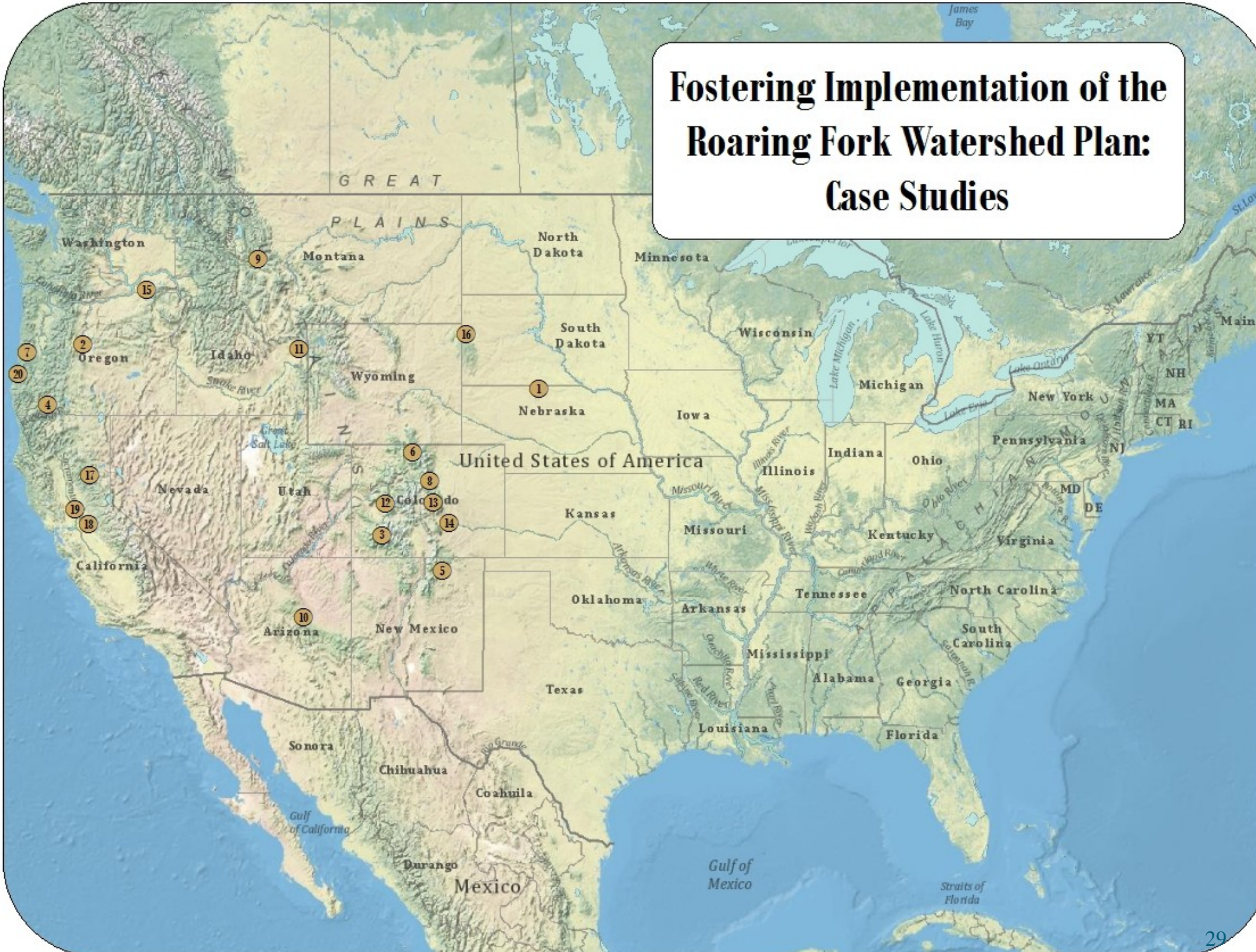
# Additional Slides



# Roadmap

1. Introduction and Research Questions
- 2. Highlighted Case Study**
3. Cross Case Analysis
4. Summary Observations and Recommendations

# Fostering Implementation of the Roaring Fork Watershed Plan: Case Studies

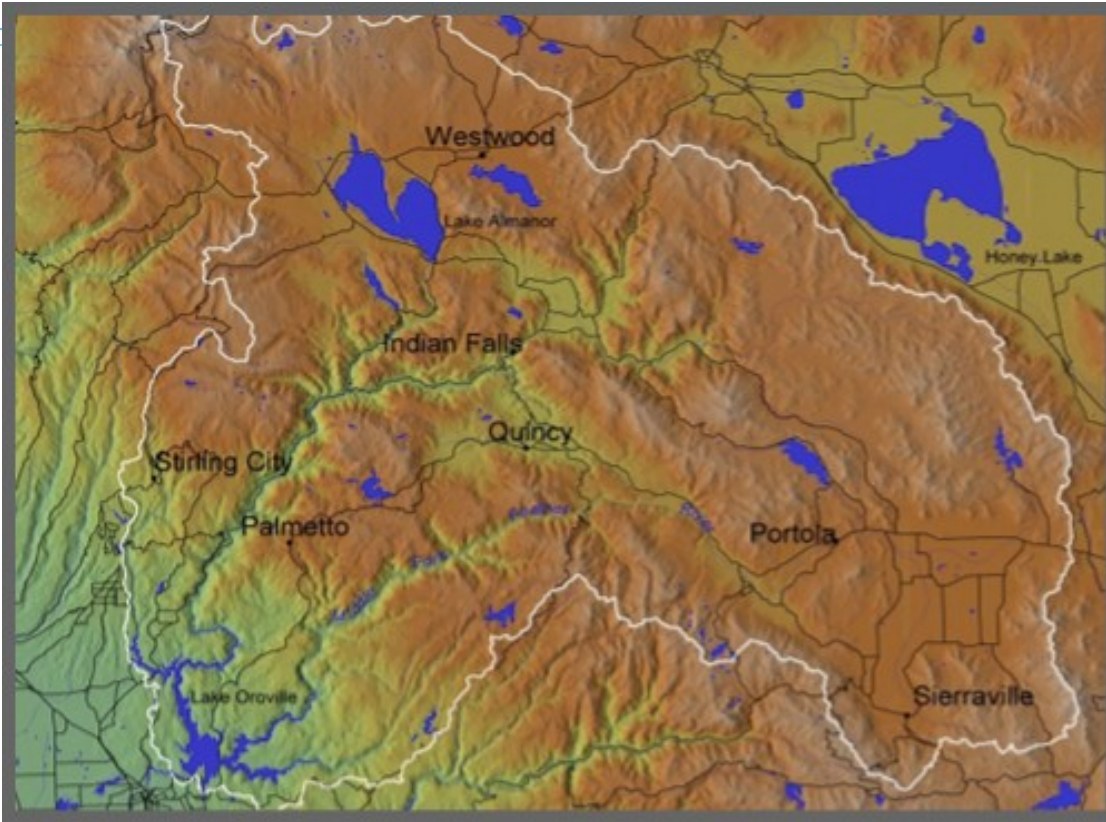


# The Feather River Coordinated Resource Management Group

- Their **mission** is to:

“Maintain and enhance ecosystems and community stability in the Feather River Watershed through collaborative landowner participation.”





# Comparison

## Feather River Coordinated Resource Management Group

- Quincy, California
- Population: 33,168
- Area of Watershed: 3,594 square miles
- Several Counties
- Dealing with water quantity issues
- 65% public land
- Geography

## Roaring Fork Watershed Collaborative

- Basalt, Colorado
- Population: 40,000
- Area of Watershed: 1,451 square miles
- Several Counties
- Dealing with Transmountain Diversions
- 75% public land
- Geography



# The Feather River Coordinated Resource Management Group

- Created in 1985
- Degraded Watershed due to decades of poor natural resource management
  - Timber, mining, grazing
- Rock Creek Dam operated by Pacific Gas & Electric (PG&E)
  - Excessive sedimentation



# The Feather River Coordinated Resource Management Group

- *Organizational Structure:*  
Ad Hoc, Technical Advisory Committees (TACs)
- *Education:*  
In-school education
- *Activities:*  
Voluntary Projects
- *Facilitating Factors:*  
Champion
- *Challenges:*  
Funding